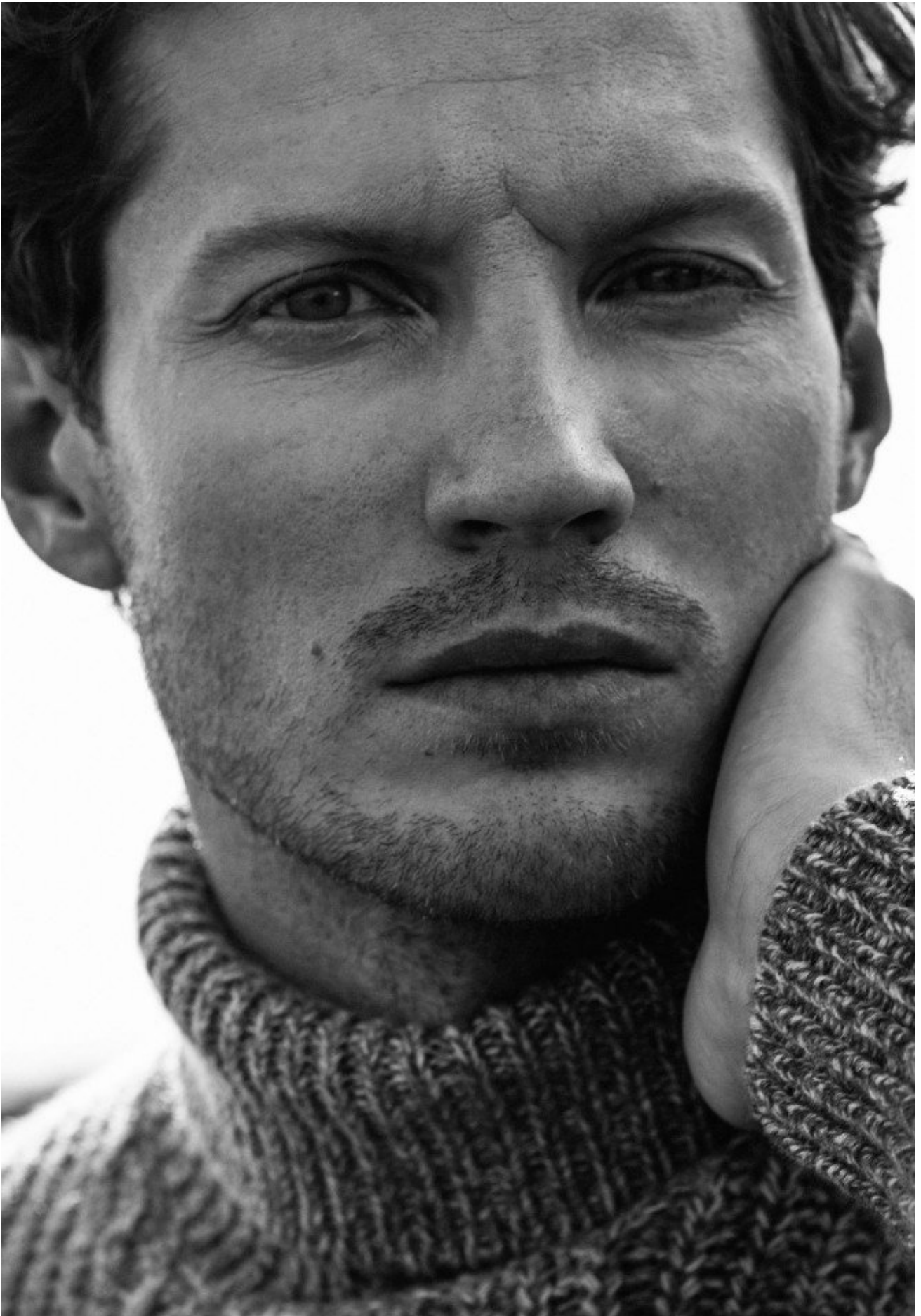


ALEX ZINCHENKO



HEIGHT 188 CM / 6'2" | CHEST 98 CM / 38.5" | WAIST 82 / 32.5 | HIPS 92 CM / 36" | HAIR DARK BLONDE | EYES BLUE-GREEN
SHOES 44 / 10 | SUIT 48 / 38

wiener
models
A KULT AGENCY

ALEX ZINCHENKO



HEIGHT 188 CM / 6'2" | CHEST 98 CM / 38.5" | WAIST 82 / 32.5 | HIPS 92 CM / 36" | HAIR DARK BLONDE | EYES BLUE-GREEN
SHOES 44 / 10 | SUIT 48 / 38

wiener
models
A KULT AGENCY

ALEX ZINCHENKO



HEIGHT 188 CM / 6'2" | CHEST 98 CM / 38.5" | WAIST 82 / 32.5 | HIPS 92 CM / 36" | HAIR DARK BLONDE | EYES BLUE-GREEN
SHOES 44 / 10 | SUIT 48 / 38

wiener
models
A KULT AGENCY

ALEX ZINCHENKO

TRENERY

Trenery Autumn 2025 shot at Buhrich House II. Designed and built 1968 - 1972 by Hugh Buhrich.
Worimi Country, Sugarloaf Point, New South Wales.



HEIGHT 188 CM / 6'2" | CHEST 98 CM / 38.5" | WAIST 82 / 32.5 | HIPS 92 CM / 36" | HAIR DARK BLONDE | EYES BLUE-GREEN
SHOES 44 / 10 | SUIT 48 / 38

wiener
models
A KULT AGENCY

ALEX ZINCHENKO



HEIGHT 188 CM / 6'2" | CHEST 98 CM / 38.5" | WAIST 82 / 32.5 | HIPS 92 CM / 36" | HAIR DARK BLONDE | EYES BLUE-GREEN
SHOES 44 / 10 | SUIT 48 / 38

wiener
models
A KULT AGENCY

ALEX ZINCHENKO



HEIGHT 188 CM / 6'2" | CHEST 98 CM / 38.5" | WAIST 82 / 32.5 | HIPS 92 CM / 36" | HAIR DARK BLONDE | EYES BLUE-GREEN
SHOES 44 / 10 | SUIT 48 / 38

wiener
models
A KULT AGENCY

ALEX ZINCHENKO



HEIGHT 188 CM / 6'2" | CHEST 98 CM / 38.5" | WAIST 82 / 32.5 | HIPS 92 CM / 36" | HAIR DARK BLONDE | EYES BLUE-GREEN
SHOES 44 / 10 | SUIT 48 / 38

wiener
models
A KULT AGENCY

ALEX ZINCHENKO



HEIGHT 188 CM / 6'2" | CHEST 98 CM / 38.5" | WAIST 82 / 32.5 | HIPS 92 CM / 36" | HAIR DARK BLONDE | EYES BLUE-GREEN
SHOES 44 / 10 | SUIT 48 / 38

wiener
models
A KULT AGENCY

ALEX ZINCHENKO



HEIGHT 188 CM / 6'2" | CHEST 98 CM / 38.5" | WAIST 82 / 32.5 | HIPS 92 CM / 36" | HAIR DARK BLONDE | EYES BLUE-GREEN
SHOES 44 / 10 | SUIT 48 / 38

wiener
models
A KULT AGENCY

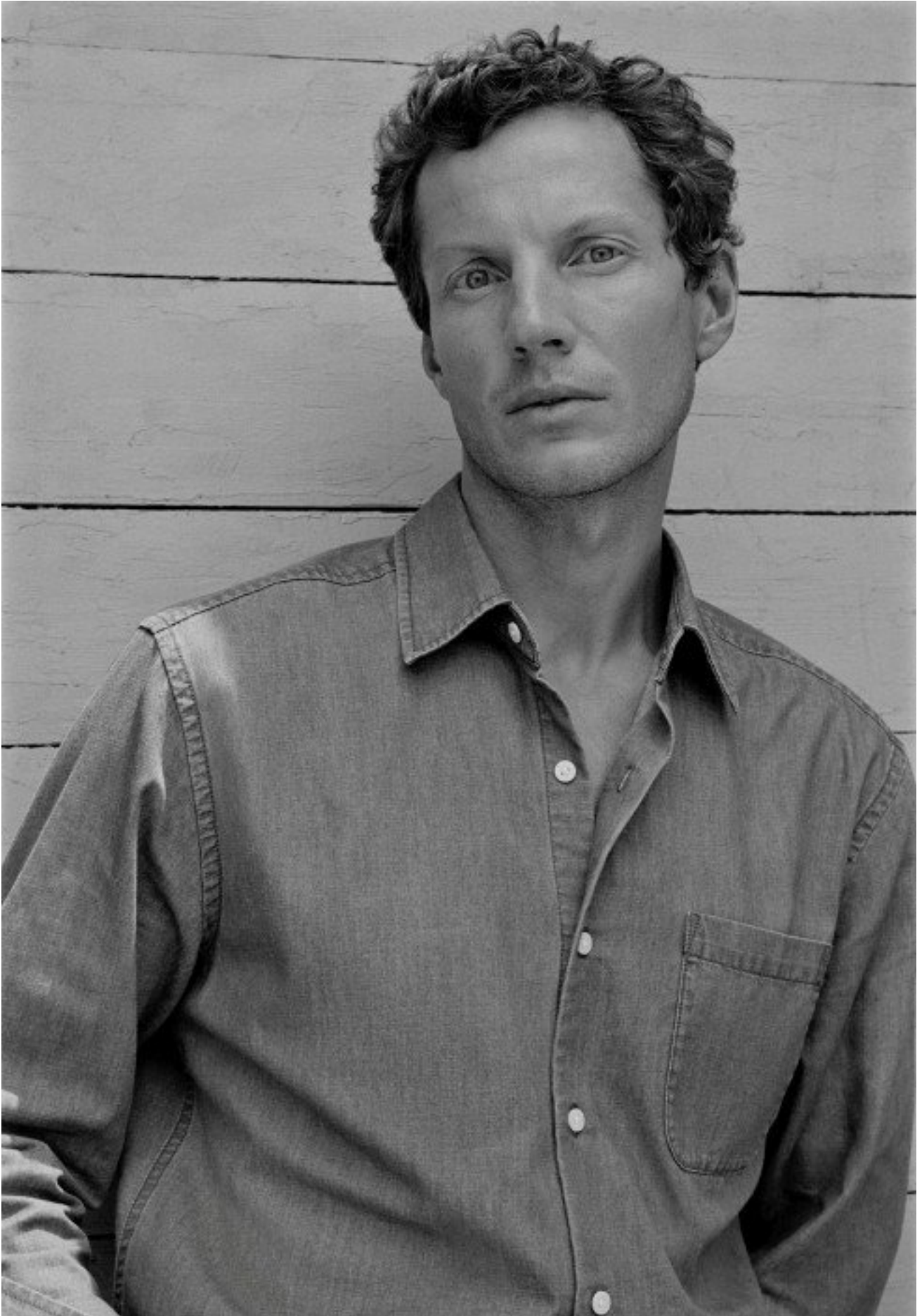
ALEX ZINCHENKO



HEIGHT 188 CM / 6'2" | CHEST 98 CM / 38.5" | WAIST 82 / 32.5 | HIPS 92 CM / 36" | HAIR DARK BLONDE | EYES BLUE-GREEN
SHOES 44 / 10 | SUIT 48 / 38

wiener
models
A KULT AGENCY

ALEX ZINCHENKO



HEIGHT 188 CM / 6'2" | CHEST 98 CM / 38.5" | WAIST 82 / 32.5 | HIPS 92 CM / 36" | HAIR DARK BLONDE | EYES BLUE-GREEN
SHOES 44 / 10 | SUIT 48 / 38

wiener
models
A KULT AGENCY

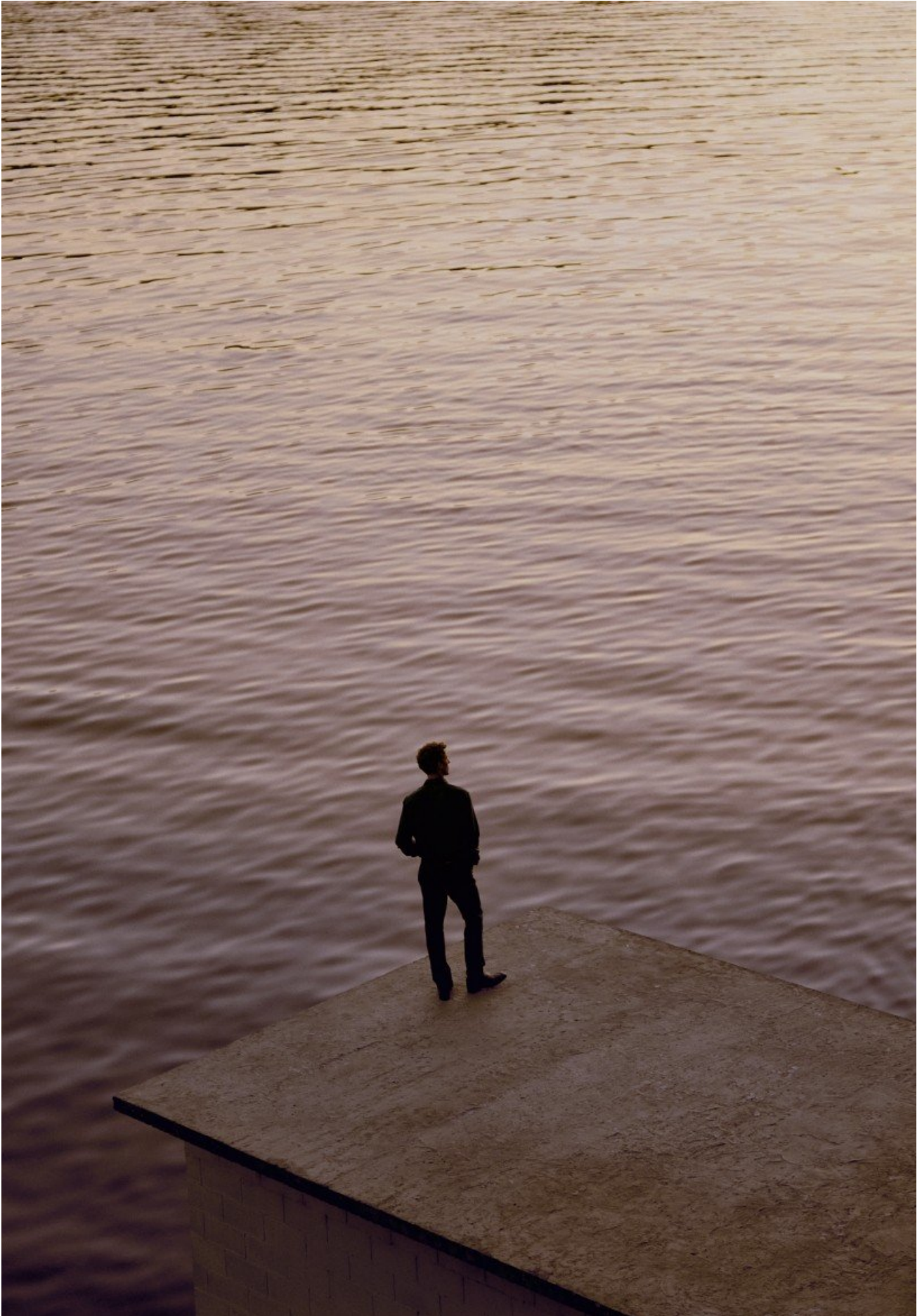
ALEX ZINCHENKO



HEIGHT 188 CM / 6'2" | CHEST 98 CM / 38.5" | WAIST 82 / 32.5 | HIPS 92 CM / 36" | HAIR DARK BLONDE | EYES BLUE-GREEN
SHOES 44 / 10 | SUIT 48 / 38

wiener
models
A KULT AGENCY

ALEX ZINCHENKO



HEIGHT 188 CM / 6'2" | CHEST 98 CM/38.5" | WAIST 82 / 32.5 | HIPS 92 CM/36" | HAIR DARK BLONDE | EYES BLUE-GREEN
SHOES 44 / 10 | SUIT 48 / 38

wiener
models
A KULT AGENCY

ALEX ZINCHENKO



HEIGHT 188 CM / 6'2" | CHEST 98 CM / 38.5" | WAIST 82 / 32.5 | HIPS 92 CM / 36" | HAIR DARK BLONDE | EYES BLUE-GREEN
SHOES 44 / 10 | SUIT 48 / 38

wiener
models
A KULT AGENCY

ALEX ZINCHENKO



HEIGHT 188 CM / 6'2" | CHEST 98 CM / 38.5" | WAIST 82 / 32.5 | HIPS 92 CM / 36" | HAIR DARK BLONDE | EYES BLUE-GREEN
SHOES 44 / 10 | SUIT 48 / 38

wiener
models
A KULT AGENCY

ALEX ZINCHENKO



HEIGHT 188 CM / 6'2" | CHEST 98 CM / 38.5" | WAIST 82 / 32.5 | HIPS 92 CM / 36" | HAIR DARK BLONDE | EYES BLUE-GREEN
SHOES 44 / 10 | SUIT 48 / 38

wiener
models
A KULT AGENCY

ALEX ZINCHENKO



HEIGHT 188 CM / 6'2" | CHEST 98 CM / 38.5" | WAIST 82 / 32.5 | HIPS 92 CM / 36" | HAIR DARK BLONDE | EYES BLUE-GREEN
SHOES 44 / 10 | SUIT 48 / 38

wiener
models
A KULT AGENCY

ALEX ZINCHENKO



HEIGHT 188 CM / 6'2" | CHEST 98 CM/38.5" | WAIST 82 / 32.5 | HIPS 92 CM/36" | HAIR DARK BLONDE | EYES BLUE-GREEN
SHOES 44 / 10 | SUIT 48 / 38

wiener
models
A KULT AGENCY

ALEX ZINCHENKO



HEIGHT 188 CM / 6'2" | CHEST 98 CM / 38.5" | WAIST 82 / 32.5 | HIPS 92 CM / 36" | HAIR DARK BLONDE | EYES BLUE-GREEN
SHOES 44 / 10 | SUIT 48 / 38

wiener
models
A KULT AGENCY

ALEX ZINCHENKO



HEIGHT 188 CM / 6'2" | CHEST 98 CM / 38.5" | WAIST 82 / 32.5 | HIPS 92 CM / 36" | HAIR DARK BLONDE | EYES BLUE-GREEN
SHOES 44 / 10 | SUIT 48 / 38

wiener
models
A KULT AGENCY

ALEX ZINCHENKO



HEIGHT 188 CM / 6'2" | CHEST 98 CM/38.5" | WAIST 82 / 32.5 | HIPS 92 CM/36" | HAIR DARK BLONDE | EYES BLUE-GREEN
SHOES 44 / 10 | SUIT 48 / 38

wiener
models
A KULT AGENCY

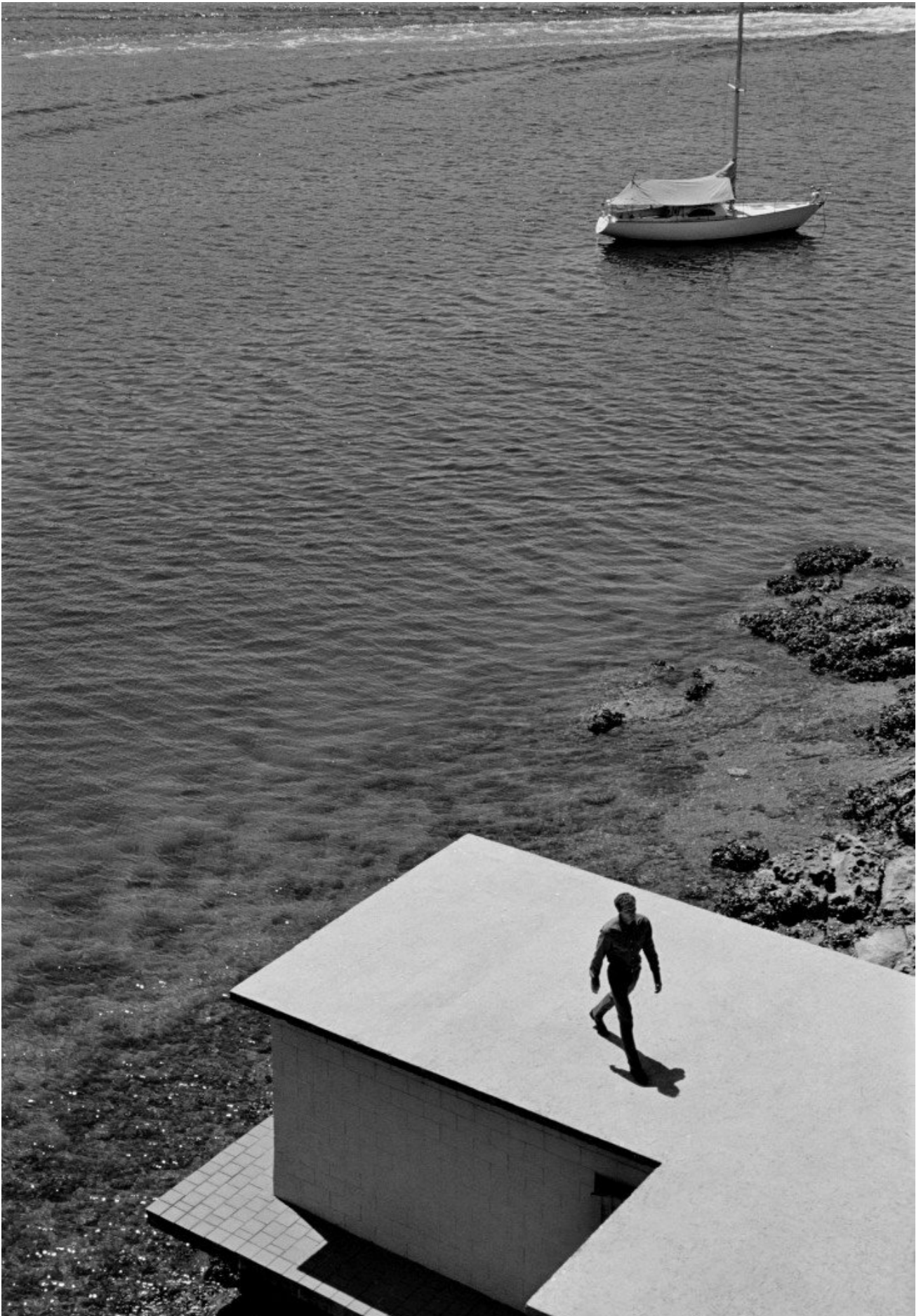
ALEX ZINCHENKO



HEIGHT 188 CM / 6'2" | CHEST 98 CM / 38.5" | WAIST 82 / 32.5 | HIPS 92 CM / 36" | HAIR DARK BLONDE | EYES BLUE-GREEN
SHOES 44 / 10 | SUIT 48 / 38

wiener
models
A KULT AGENCY

ALEX ZINCHENKO



HEIGHT 188 CM / 6'2" | CHEST 98 CM / 38.5" | WAIST 82 / 32.5 | HIPS 92 CM / 36" | HAIR DARK BLONDE | EYES BLUE-GREEN
SHOES 44 / 10 | SUIT 48 / 38

wiener
models
A KULT AGENCY

ALEX ZINCHENKO



HEIGHT 188 CM / 6'2" | CHEST 98 CM / 38.5" | WAIST 82 / 32.5 | HIPS 92 CM / 36" | HAIR DARK BLONDE | EYES BLUE-GREEN
SHOES 44 / 10 | SUIT 48 / 38

wiener
models
A KULT AGENCY

ALEX ZINCHENKO



HEIGHT 188 CM / 6'2" | CHEST 98 CM / 38.5" | WAIST 82 / 32.5 | HIPS 92 CM / 36" | HAIR DARK BLONDE | EYES BLUE-GREEN
SHOES 44 / 10 | SUIT 48 / 38

wiener
models
A KULT AGENCY

ALEX ZINCHENKO



HEIGHT 188 CM / 6'2" | CHEST 98 CM / 38.5" | WAIST 82 / 32.5 | HIPS 92 CM / 36" | HAIR DARK BLONDE | EYES BLUE-GREEN
SHOES 44 / 10 | SUIT 48 / 38

wiener
models
A KULT AGENCY

ALEX ZINCHENKO



HEIGHT 188 CM / 6'2" | CHEST 98 CM / 38.5" | WAIST 82 / 32.5 | HIPS 92 CM / 36" | HAIR DARK BLONDE | EYES BLUE-GREEN
SHOES 44 / 10 | SUIT 48 / 38

wiener
models
A KULT AGENCY

ALEX ZINCHENKO



HEIGHT 188 CM / 6'2" | CHEST 98 CM / 38.5" | WAIST 82 / 32.5 | HIPS 92 CM / 36" | HAIR DARK BLONDE | EYES BLUE-GREEN
SHOES 44 / 10 | SUIT 48 / 38

wiener
models
A KULT AGENCY

ALEX ZINCHENKO



HEIGHT 188 CM / 6'2" | CHEST 98 CM / 38.5" | WAIST 82 / 32.5 | HIPS 92 CM / 36" | HAIR DARK BLONDE | EYES BLUE-GREEN
SHOES 44 / 10 | SUIT 48 / 38

wiener
models
A KULT AGENCY

ALEX ZINCHENKO



HEIGHT 188 CM / 6'2" | CHEST 98 CM / 38.5" | WAIST 82 / 32.5 | HIPS 92 CM / 36" | HAIR DARK BLONDE | EYES BLUE-GREEN
SHOES 44 / 10 | SUIT 48 / 38

wiener
models
A KULT AGENCY

ALEX ZINCHENKO



HEIGHT 188 CM / 6'2" | CHEST 98 CM / 38.5" | WAIST 82 / 32.5 | HIPS 92 CM / 36" | HAIR DARK BLONDE | EYES BLUE-GREEN
SHOES 44 / 10 | SUIT 48 / 38

wiener
models
A KULT AGENCY

ALEX ZINCHENKO



HEIGHT 188 CM / 6'2" | CHEST 98 CM / 38.5" | WAIST 82 / 32.5 | HIPS 92 CM / 36" | HAIR DARK BLONDE | EYES BLUE-GREEN
SHOES 44 / 10 | SUIT 48 / 38

wiener
models
A KULT AGENCY

ALEX ZINCHENKO



HEIGHT 188 CM / 6'2" | CHEST 98 CM / 38.5" | WAIST 82 / 32.5 | HIPS 92 CM / 36" | HAIR DARK BLONDE | EYES BLUE-GREEN
SHOES 44 / 10 | SUIT 48 / 38

wiener
models
A KULT AGENCY

ALEX ZINCHENKO



HEIGHT 188 CM / 6'2" | CHEST 98 CM / 38.5" | WAIST 82 / 32.5 | HIPS 92 CM / 36" | HAIR DARK BLONDE | EYES BLUE-GREEN
SHOES 44 / 10 | SUIT 48 / 38

wiener
models
A KULT AGENCY

ALEX ZINCHENKO



HEIGHT 188 CM / 6'2" | CHEST 98 CM / 38.5" | WAIST 82 / 32.5 | HIPS 92 CM / 36" | HAIR DARK BLONDE | EYES BLUE-GREEN
SHOES 44 / 10 | SUIT 48 / 38

wiener
models
A KULT AGENCY

ALEX ZINCHENKO

OGER SPRING - REPORT PAGE 2



Pak Merk
Das Merk
Schoenen Merk

41

HEIGHT 188 CM / 6'2" | CHEST 98 CM / 38.5" | WAIST 82 / 32.5 | HIPS 92 CM / 36" | HAIR DARK BLONDE | EYES BLUE-GREEN
SHOES 44 / 10 | SUIT 48 / 38

wiener
models
A KULT AGENCY

ALEX ZINCHENKO

EDITION / VOL. 4 – FASHION STORY I



Mantel BOGLIOLI
Pullover AIDA BARNI

26 . 27

HEIGHT 188 CM / 6'2" | CHEST 98 CM / 38.5" | WAIST 82 / 32.5 | HIPS 92 CM / 36" | HAIR DARK BLONDE | EYES BLUE-GREEN
SHOES 44 / 10 | SUIT 48 / 38

wiener
models
A KULT AGENCY

ALEX ZINCHENKO



HEIGHT 188 CM / 6'2" | CHEST 98 CM / 38.5" | WAIST 82 / 32.5 | HIPS 92 CM / 36" | HAIR DARK BLONDE | EYES BLUE-GREEN
SHOES 44 / 10 | SUIT 48 / 38

wiener
models
A KULT AGENCY

ALEX ZINCHENKO

EDITION / VOL. 4 – FASHION STORY III



58, 59

HEIGHT 188 CM / 6'2" | CHEST 98 CM / 38.5" | WAIST 82 / 32.5 | HIPS 92 CM / 36" | HAIR DARK BLONDE | EYES BLUE-GREEN
SHOES 44 / 10 | SUIT 48 / 38

wiener
models
A KULT AGENCY